



edson solar

edson *Electric*

Duplex Stainless Steel Electric Boosted Solar Hot Water

- Reduce your hot water power bill by up to 90%*
- Evacuated Solar Tubes provide superior heat output, even on cloudy days
- Tested to Australian Standards for frost protection (-15°C)
- Generous Government rebates still apply

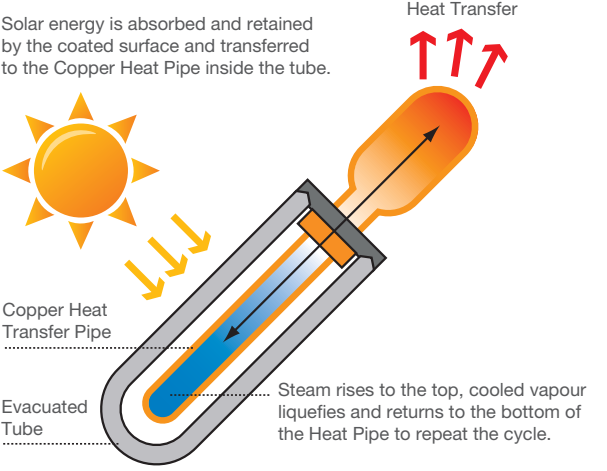
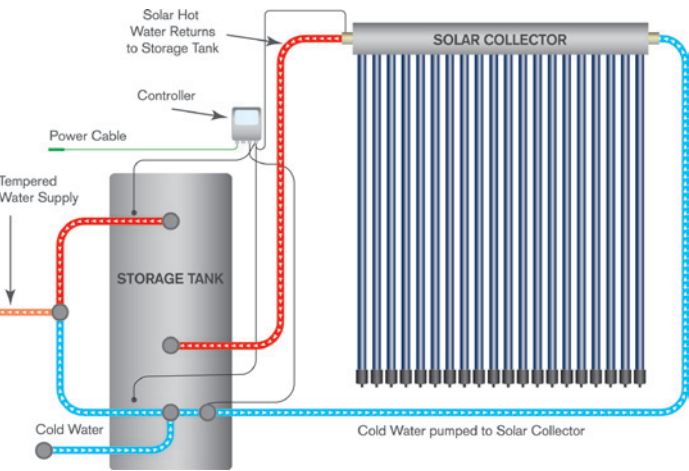


1300 880 154 | edson.com.au

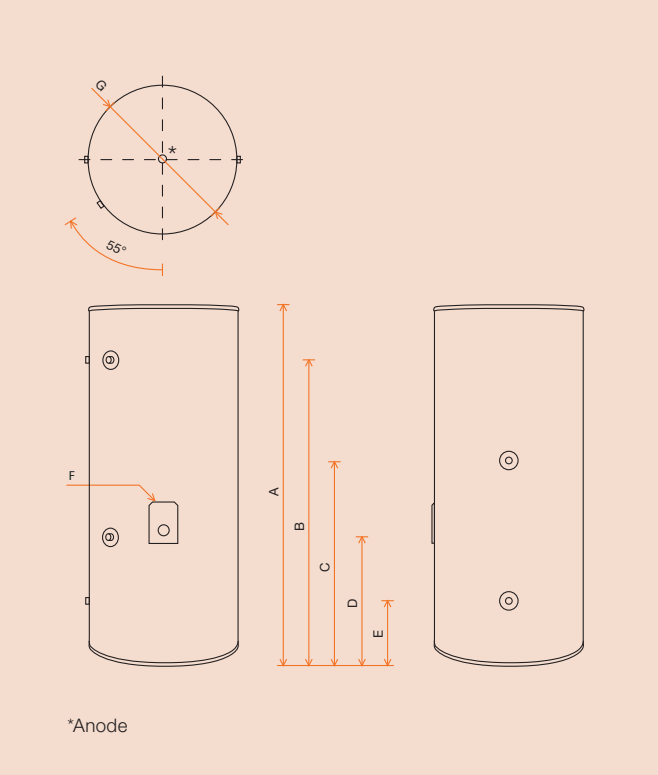
*Depending on the climate and the model of heater.



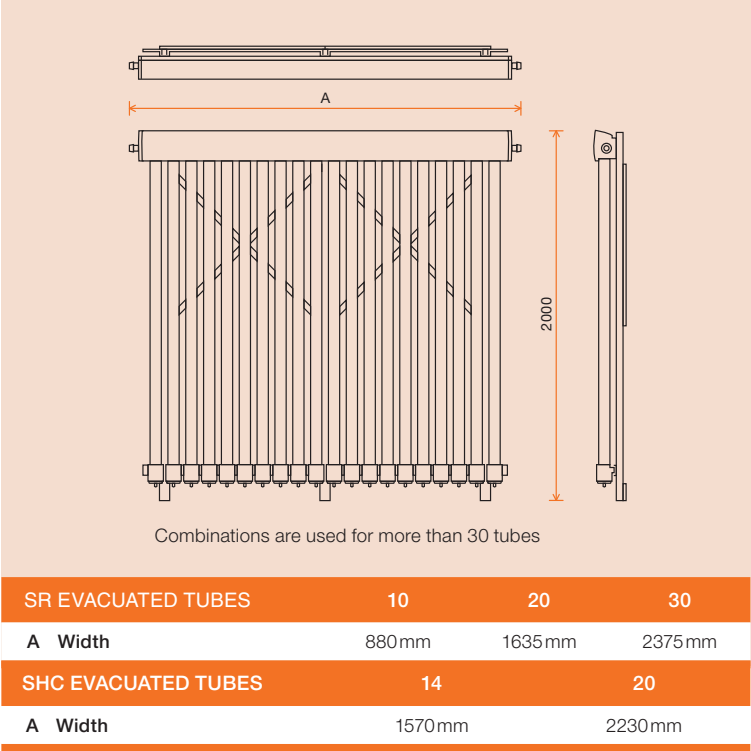
HOW THE SYSTEM WORKS



STAINLESS STEEL TANK



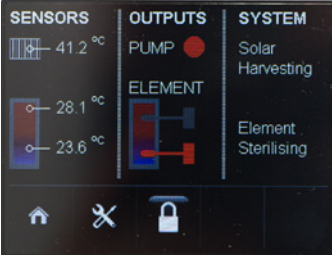
EVACUATED TUBE COLLECTOR



SPECIFICATION	ES 250 LITRE	ES 315 LITRE	ES 400 LITRE
A Height	1625mm	1985mm	1830mm
B Hot Water Outlet & PTR Valve	1335mm	1645mm	1540mm
C Sensor Pocket	940mm	1110mm	1005mm
D Solar Return	620mm	735mm	590mm
E Cold Water Inlet	320mm	320mm	270mm
F Electric Element	3.6 kW	3.6 kW	3.6 kW
G Diameter	600mm	600mm	700mm
Material	Duplex Stainless Steel	Duplex Stainless Steel	Duplex Stainless Steel

All dimensions displayed in millimetres. All information and guidelines outlined were correct at the time of printing.

For commercial installations, contact your nearest Edson authorised reseller or refer to www.edson.com.au.



Optional internal touch control available



Sales: 1300 880 154 | Service 1300 303 779
Fax: + 61 3 9548 5176 | P.O. Box 5008, Cheltenham East, VIC 3192
Email: sales@edson.com.au | edson.com.au | ABN 63 606 991 897